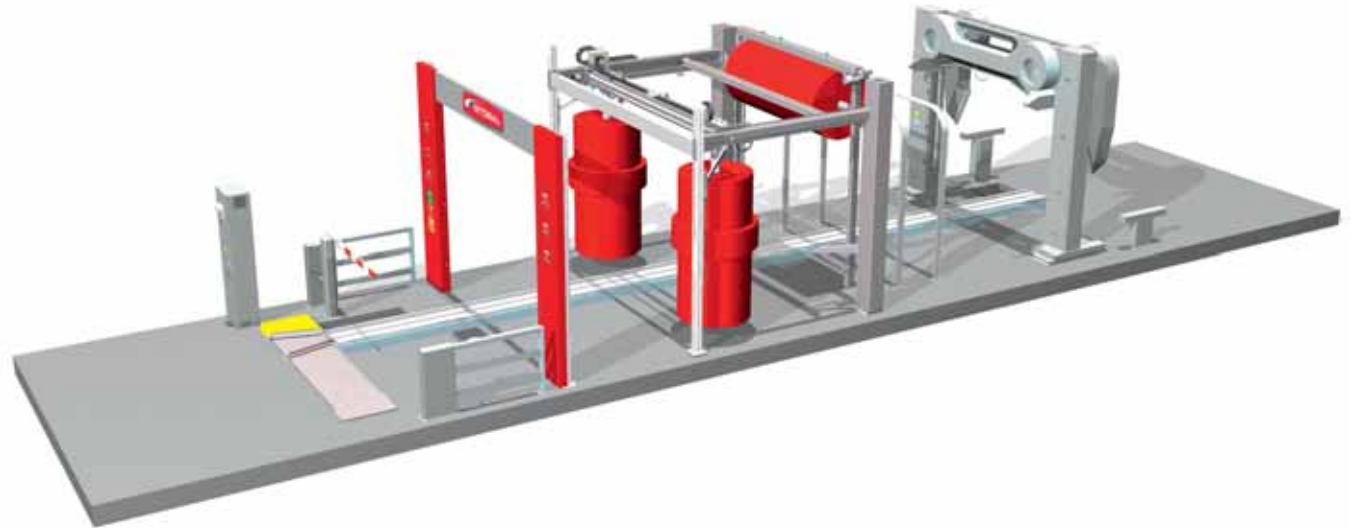


A silver car is shown from a side-front perspective, moving through a car wash tunnel. Large, bright red brushes are in motion, cleaning the car's body. The background shows the industrial structure of the wash tunnel with various pipes and mechanical components.

WASH TUNNELS

Wash technology constantly evolving

Istobal wash tunnels are designed for places that demand high productivity. True to the principle of versatility in its widest sense, there are up to 18 configurations in two ranges, all varying in sizes and characteristics, and able to meet the most demanding of production needs, whatever the scale, thanks to differing conveyor lengths, which range from 9.3 m. right up to 32 m. Depending on the length chosen, throughput goes from 30 cars/hour on the most basic model in the TA range, to 100 cars/hour on the TC range.



MOD. 4TA1000

MOD. 4TB1000

RANGE	Conveyor length m.	Chain	Number of brushes	Cars/hour
				3 Brushes
TA	9.30	2" Basic	3	30
TA	10.90	2" Basic	3	30
TA	12.50	2" Basic	3	30
TB	10.90	2"	3	30
TB	12.50	2"	3	55
TB	14.10	2"	3	55
TB	15.80	2"	3	55
TB	17.40	2"	3	55

By moving along their guide rails, the vertical brushes are able to stay perfectly in line with the front and rear of the vehicle they are working on. The horizontal brush follows the rear of the vehicle, using a pneumatic system, and rises at the same time, until it reaches a height of 1m above the floor. These movements are made without stopping the conveyor.

In order to comply with European Directive 98/37/CE, regarding machine safety, side access to a wash tunnel is expressly prohibited. ISTOBAL, S.A. offers several solutions in this respect and declines all responsibility for failure to observe this indication.

Output is based on a vehicle length of 4.80m.

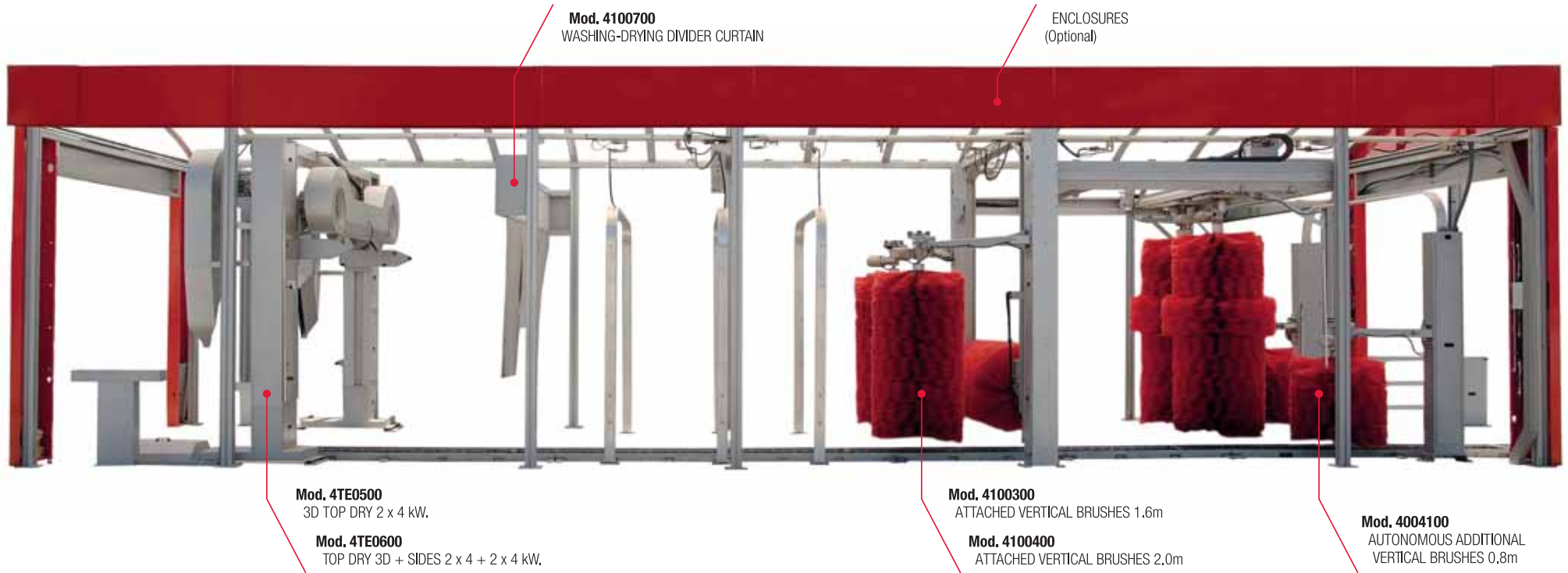
RANGE TA - TB

The 4TA range comes in three different sizes to adapt to limited spaces. With conveyor installation lengths from 9,3m up to 12,5m., the three variations guarantee a much higher level of productivity than conventional rollovers.

The 4TB range comes in five different sizes to adapt to limited spaces. With conveyor installation lengths from 10.9m up to 17.4m, the five variations guarantee a much higher level of productivity than conventional roll-overs: from the 30 cars/hour of the short chain, up to the 55 cars/hour of the top performer.

Range TA - Up to 30 vehicles/hour
Range TB - Up to 55 vehicles/hour





Mod. 4100700
WASHING-DRYING DIVIDER CURTAIN

ENCLOSURES
(Optional)

Mod. 4TE0500
3D TOP DRY 2 x 4 kW.

Mod. 4TE0600
TOP DRY 3D + SIDES 2 x 4 + 2 x 4 kW.

Mod. 4100300
ATTACHED VERTICAL BRUSHES 1.6m

Mod. 4100400
ATTACHED VERTICAL BRUSHES 2.0m

Mod. 4004100
AUTONOMOUS ADDITIONAL
VERTICAL BRUSHES 0,8m



Mod. 32FP500
ENTRY ARCH BASIC FAIRING
(For installation with enclosure only)



Mod. 32FQ400
ENTRY ARCH SUPER FAIRING
(For installation with enclosure. Also requires canopy)



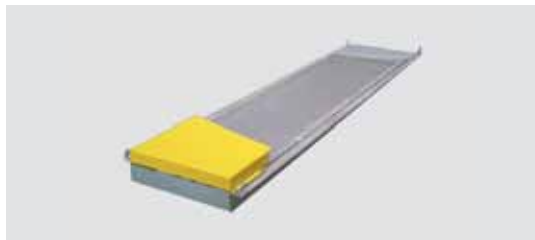
Mod. 4101300
REAR ARCH BASIC FAIRING
(For installation with enclosure only)



Mod. 4108200
REAR ARCH SUPER FAIRING
(For installation with enclosure. Also requires canopy)

Fairing Colour.

Conveyor installation



Mod. 4001100

VEHICLE ALIGNMENT PLATFORM

At the entrance to the machine at ground level in the space designated by the civil works. Helps centre the wheels of the vehicle, in combination with rollers set in a "V" shape.

Length chain m.	Conveyor installation			
	For TA		For TB	
9,30	2" Basic	32ZE400		
10,90	2" Basic	32WO800		
12,50	2" Basic	31WG600		
10,90			2"	30GT700
12,50			2"	2927800
14,10			2"	2927900
15,80			2"	2928000
17,40			2"	2928100

Range TA - Up to 30 vehicles/hour
Range TB - Up to 55 vehicles/hour



ENCLOSURES

RANGE	Conveyor length m.	BASIC UNIT		CANOPY		PANELLING			ROOF		LIGHTING		ROOF REINFORCING		
		Quant.	Model	Quant.	Model	GLASS		POLYCARB.	Quant.	Model	Quant.	Model	SNOW LOAD RESISTENCE:		
						Quant.	Model	Model					100 Kg/m ² Quant.	160 Kg/m ² Quant.	Model
TA	9,30	1	4108800	1	4109100	1 ÷ 2	4102100		1	4104400	1	4109700	6	22	32ET600
TA	10,90	1	4108900	1	4109200	1 ÷ 2	4103400		1	4104500	1	4107400	8	28	
TA	12,50	1	4109000	1	4109300	1 ÷ 2	4104600		1	4105200	1	4107500	9	31	
TB	10,90	1	4100200	1	4105600	1 ÷ 2	4102200	4106200	1	4104500	1	4107400	8	28	
TB	12,50	1	4101100	1	4106300	1 ÷ 2	4103000	4103500	1	4105200	1	4107500	9	31	
TB	14,10	1	4101600	1	4104700	1 ÷ 2	4105800	4107000	1	4103300	1	4107600	11	37	
TB	15,80	1	4102800	1	4104900	1 ÷ 2	4105900	4107100	1	4103800	1	4107700	13	43	
TB	17,40	1	4102900	1	4105100	1 ÷ 2	4106100	4107200	1	4103900	1	4107800	15	49	

Taking up the performance challenge

More vehicles, more speed, a more modern look and higher level of quality....
 Everything is possible for ISTOBAL wash tunnels, whatever your demands.
 Because only an ISTOBAL wash tunnel can clean up to 100 vehicles per hour,
 still give a thorough yet, gentle wash and protect the vehicle.

The key? Developing solutions with a high degree of versatility and minimum maintenance; the wide variety of conveyor lengths available; and the possibility of including more than a hundred accessories to personalise the finish and maximise efficiency.

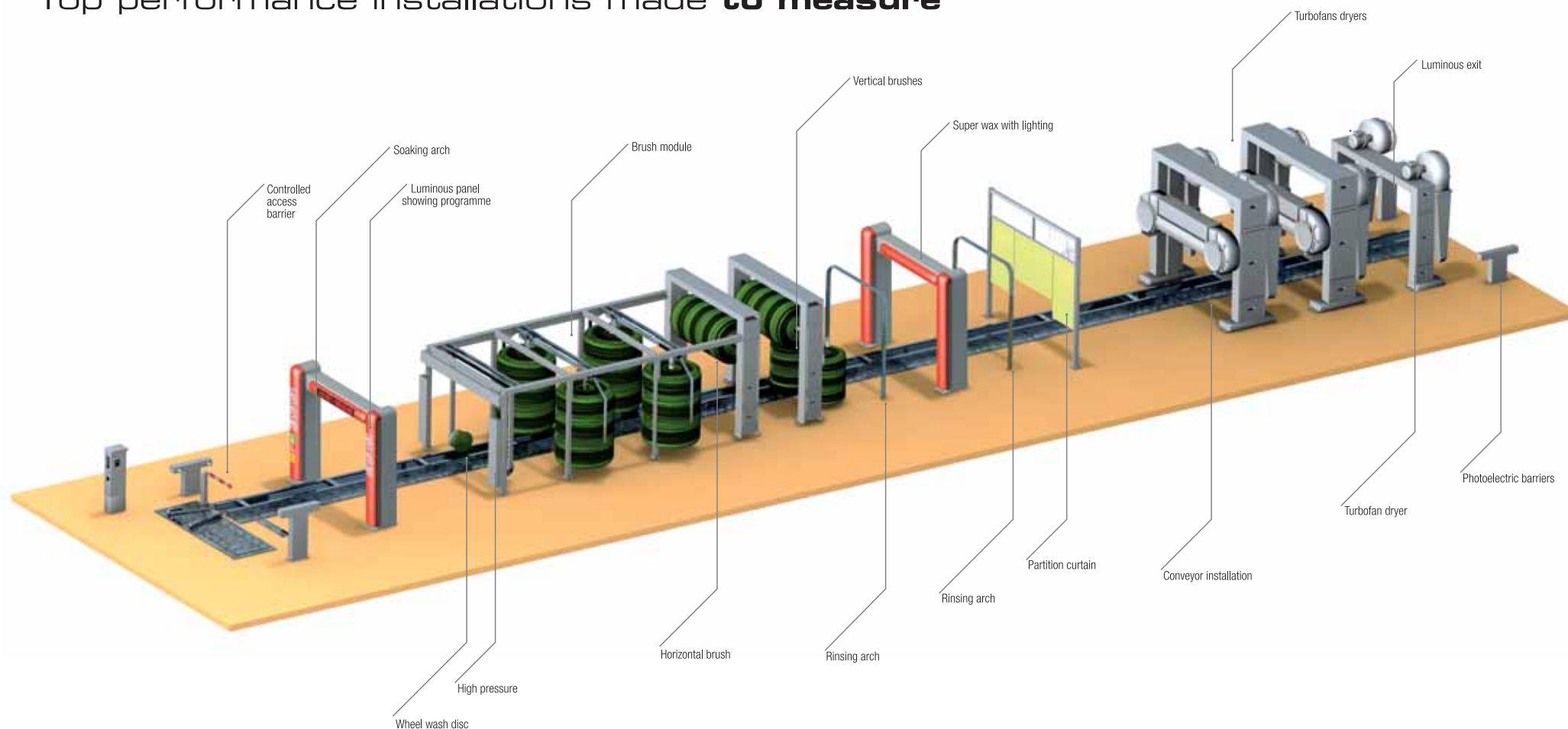
MOD. 4TC1000

RANGE	Conveyor length m.	Chain		Number of brushes		Cars/hour	
						3 Brushes	5 Brushes
TC	12,50	2"	4"	3	5	50	
TC	14,10	2"	4"	3	5	50	
TC	15,80	2"	4"	3	5	50	80
TC	17,40	2"	4"	3	5	60	80
TC	19,00	2"	4"	3	5	60	80
TC	20,60	2"	4"	3	5	60	80
TC	22,30		4"	3	5	60	80
TC	23,90		4"	3	5	60	80
TC	25,50		4"	3	5	60	90
TC	27,10		4"	3	5	60	90
TC	28,80		4"	3	5	60	90
TC	30,40		4"	3	5	60	100
TC	32,00		4"	3	5	60	100

Output is based on a vehicle length of 4.80m.

In order to comply with European Directive 98/37/CE, regarding machine safety, side access to a wash tunnel is expressly prohibited. ISTOBAL, S.A. offers several solutions in this respect and declines all responsibility for failure to observe this indication.

Top performance installations made **to measure**



Thanks to their size, tunnels are the ideal way to see the wide variety of Istobal wash systems in action. The rinsing arch is standard there are up to a hundred different optional extras for a made-to-measure wash tunnel. You can opt for high-pressure pre-wash, medium pressure pre-wash or chemical spray. Improve results in key areas (wheels, the underside, etc.) with specific accessories, such as the rotating textile strip dryer, which removes every last drop remaining from the wash process. Or use cleaning and care products, which guarantee a machine in perfect working order and excellent results for the vehicle.



Power and versatility in the dry

A quality finish is achieved with a perfect drying process. Thanks to the amount of space available, wash tunnels are the ideal product for getting a really effective dry with turbofans. There are five different models of turbofan, with power ranging from 8 Kw to 30 Kw.



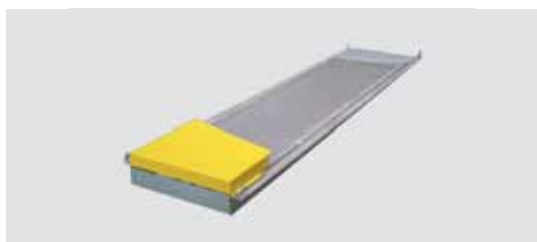
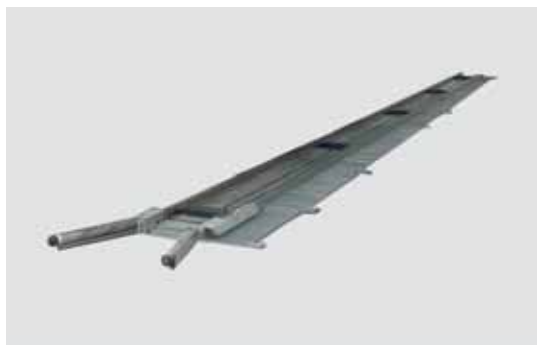
A structure geared to perfection

High-tech command posts, precise dosage systems, powerful turbofans.... Istobal tunnels boast the leading-edge technology in the sector, put skilfully together, to guarantee the best possible performance.

All the systems are integrated into a rugged structure, with variable conveyor lengths to cater for the different throughput requirements. Now the top performance range TC has a new, sleeker looking entry arch in aluminium, offering even more options. The rinsing arch comes as standard and the fairing colour is customisable. A whole host of optional components and lights can be added, including the new rotating textile strip dryer. An advanced system, this is added to end of the conveyor and is designed to remove every last drop remaining from the wash process.



Conveyor installation



Mod. 4001100

VEHICLE ALIGNMENT PLATFORM

At the entrance to the machine at ground level in the space designated by the civil works. Helps centre the wheels of the vehicle, in combination with rollers set in a "V" shape.



Mod. 4001000

ACCESS CONTROL BARRIER

Located at the entrance, to control vehicles entering.

Length chain m.	Conveyor installation			
	2"	2927800	4"	2928400
12.50	2"	2927800	4"	2928400
14.10	2"	2927900	4"	2928500
15.80	2"	2928000	4"	2928600
17.40	2"	2928100	4"	2928700
19.00	2"	2928200	4"	2928800
20.60	2"	2928300	4"	2928900
22.30			4"	2929000
23.90			4"	2929100
25.50			4"	2929200
27.10			4"	2929300
28.80			4"	2929400
30.40			4"	2929500
32.00			4"	2929600



Mod. 31QY800

Waxing

Model	
2927300	WAXING ARCH
2929900	SUPER WAX
31QY800	SUPER WAX WITH LIGHTING (Fairing Colour)

Not compatible with each other.

Superwax spraying device fitted to the waxing arch.

Superwax with lighting has a set of lights that come on when the waxing process starts.



Mod. 31QY700

LUXURY ENTRY ARCH Fairing Colour.



Mod. 4046500

ROCKER PANEL BRUSHES MODULE (HORIZ.)

Require at least +3,2 m conveyor system.

Two 2.0 m length rollers acted by 0.55 Kw. motors fit the vehicle width, thoroughly washing the wheels and the low sides.



Mod. 4003800

ATTACHED ADDITIONAL VERTICAL BRUSHES 0.8m.



Mod. 4004000

ATTACHED ADDITIONAL VERTICAL BRUSHES 2.0m.

Mod. 4003900

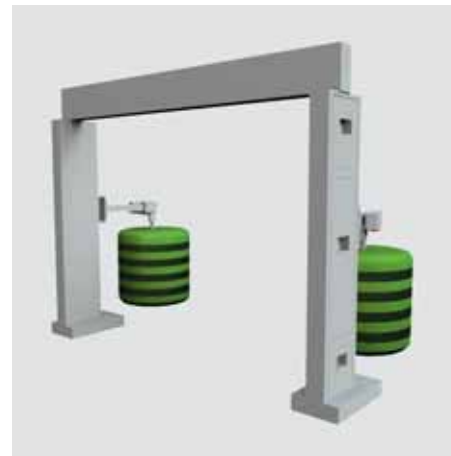
ATTACHED ADDITIONAL VERTICAL BRUSHES 1.6m.



Mod. 4003700

SUPPLEMENTARY HORIZONTAL BRUSH

Module installed next to wash module and which helps to improve the quality of the wash. Only possible on 19 m upwards and the 4TC range.



Mod. 4004100

AUTONOMOUS ADDITIONAL VERTICAL BRUSHES 0,8m.



Mod. 4004200

AUTONOMOUS ADDITIONAL VERTICAL BRUSHES 1.6m.

On 4TB/4TC, up to two groups of additional vertical brushes can be included.

With jointed arms which can be attached to the horizontal brush module or fitted separately.

Three different heights available (autonomous - two only).



Mod. 4029600

M.P. 15 BAR PREWASH ATTACHED
Fitted in front of the vertical brushes and comprising two lateral pipes with mounting.
Requires water pump 5,5 Kw Mod. 4026400.

Mod. 4021000

M.P. 15 BAR PREWASH ON PORTAL
Fitted to the entrance portal and comprising two lateral pipes.
Requires water pump 5,5 Kw Mod. 4026400.

Mod. 4081800

H.P. PREWASH 15/80 BAR LOWER SIDE
Effects an up and down movement to wash wheels and the lower sections along the whole length of the vehicle. Requires water pump Mod. 4026400 or 4000100.

Mod. 4024900

H.P. 160 BAR LOWER SIDES PREWASH (AUTONOMOUS)
Fitted on a separate arch. Washes along the whole length of the lower part of the vehicle, with a rotating movement.
Includes water pump.



Mod. 4003000

H.P. 80 BAR SIDES+TOP PREWASH (ATTACHED).
Requires water pump Mod. 4005100.



Mod. 4022700

H.P. 80 BAR SIDES+TOP PREWASH (AUTONOMOUS).
Requires water pump Mod. 4005100.

Sides high pressure is activated by a gearbox and moves vertically, to clean the sides of the vehicle.
Top high pressure wash is activated by a gearbox and moves horizontally at right angles to the bay.
They can be attached (fitted to the entrance module) or autonomous (installed on a separate supporting arch).



Mod. 4TE0100 - TURBOFAN DRIER 2 x 3,8 + 2 x 3,8 = 15,2 Kw.

Mod. 4TE0200 - TURBOFAN DRIER 2 x 5,5 + 2 x 5,5 = 22 Kw.

Mod. 4TE0300 - TURBOFAN DRIER 2 x 7,5 + 2 x 5,5 = 26 Kw.

Mod. 4TE0400 - TURBOFAN DRIER 2 x 7,5 + 2 x 7,5 = 30 Kw.

1 for chain lengths 12,5 m. to 17,4 m.
1 or 2 for chain lengths 19,0 m. to 32,0 m.



Mod. 4TE0500

3D TOP DRY 2 x 4 = 8 Kw.

Mod. 4TE0600

TOP DRY 3D + SIDES
2 x 4 + 2 x 4 = 16 Kw.



Mod. 4TD0300

TURBOFAN HORIZONTAL DRIER 2 x 5,5 = 11 Kw.
For chain length from 19,0 m. to 32,0 m.



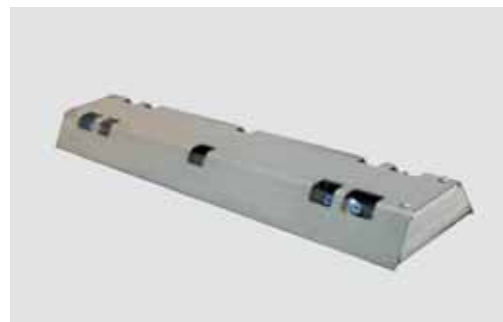
Mod. 4081400

ROTATING TEXTILE STRIP DRYING
For chain length from 17,4 m. to 32,0 m.
We recommend that the strips be washed and dried every 6 weeks maximum.
This process means that the module will be out of action for approximately 4 days, for which we advise the purchase of a spare set.



Model	
4023900	COMPUTER CONNECTION BY CABLE (Includes 100 mts.)
4024000	COMPUTER CONNECTION BY MODEM
4024100	COMPUTER CONNECTION BY GSM
30KF800	GSM CONNECTION ON WASH MACHINE
30MD400	BUS CAN BOARD
4033600	COMPUTER CONNECTION CABLE BUS CAN
4099700	REMOTE COMMUNICATION AND ALERTS

Different technological connections which allow access to information about the machine at a distance or by remote control.



Mod. 4109800
UNDERCHASSIS WASH 45° ANGLE



Mod. 4020600
UNDERCHASSIS WASH 10/15 BAR 160 L/M
Consists of pipes with nozzles at right angles to the bay and installed below ground level. Requires water pump Mod. 4004700 or 4026400.

Mod. 4021100
UNDERCHASSIS PROTECTION
Requires underchassis wash.



Mod. 4004500
WASHING-DRYING DIVIDER CURTAIN



Mod. 4083800
SUPER ACTIVE FOAM

Mod. 4082400
THREE-COLOUR SUPER ACTIVE FOAM + WHITE

Situated on the entrance portal, and starts when the vehicle is positioned and it detects the roller coming out.



Mod. 4020500
ATTACHED DISC WHEELWASH 100 C/H

Mod. 4023500
AUTONOMOUS DISC WHEELWASH 50 C/H

Mod. 4023600
AUTONOMOUS DISC WHEELWASH 100 C/H

Comprises two supporting columns with displacement guide rails to follow the wheel of the vehicle. Can be fitted alongside the wash module columns or separately.

RANGE TA - TB

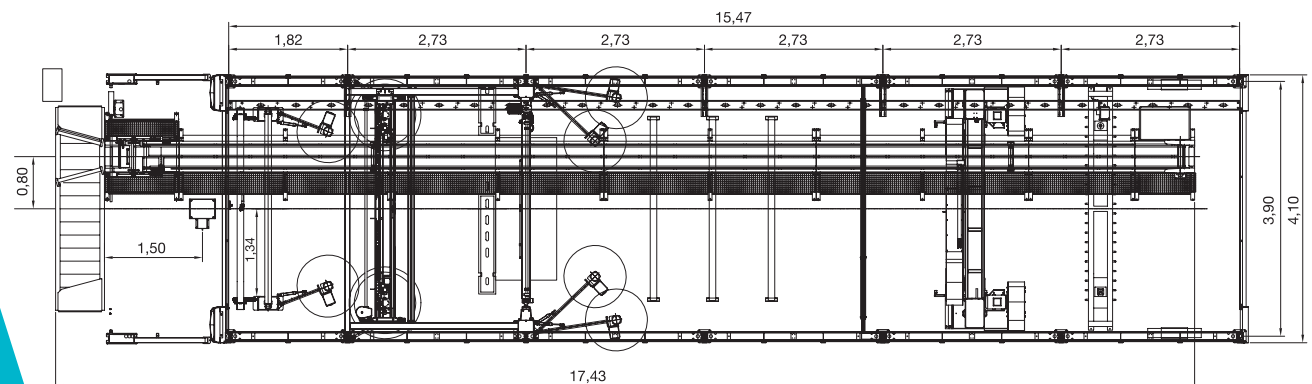
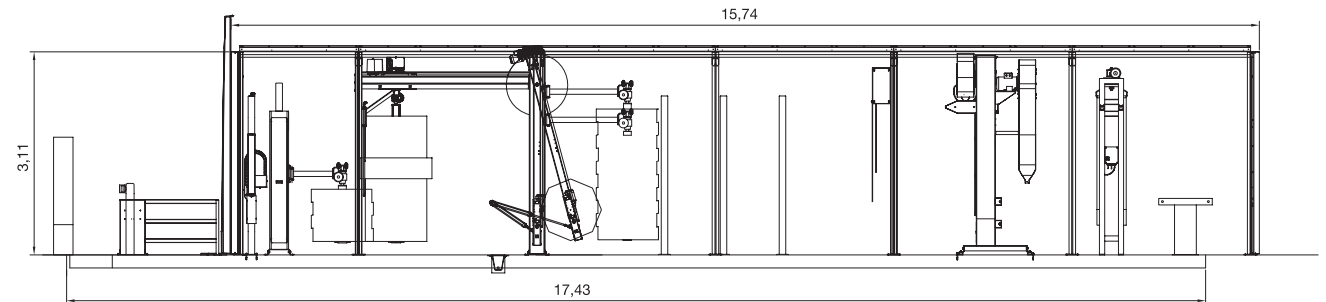
TECHNICAL DRAWINGS AND DIMENSIONS

MOD. 4TA1000

MOD. 4TB1000

RANGE	Conveyor length m.	Recommended bay m.			Max. wash Height m.	Max. wash Width m.	With Enclosures m.		
		Height	Width	Length			Height	Width	Length
TA	9.30	3.50	4.20	15.60	2.30	2.35	3.65	4.10	9.46
TA	10.90	3.50	4.20	17.20	2.30	2.35	3.65	4.10	11.28
TA	12.50	3.50	4.20	19.00	2.30	2.35	3.65	4.10	12.79
TB	10.90	3.50	4.20	17.20	2.30	2.35	3.50	5.00	10.90
TB	12.50	3.50	4.20	19.00	2.30	2.35	3.50	5.00	12.50
TB	14.10	3.50	4.20	20.60	2.30	2.35	3.50	5.00	14.10
TB	15.80	3.50	4.20	22.30	2.30	2.35	3.50	5.00	15.80
TB	17.40	3.50	4.20	23.90	2.30	2.35	3.50	5.00	17.40

In order to comply with European Directive 98/37/CE, regarding machine safety, side access to a wash tunnel is expressly prohibited. ISTOBAL, S.A. offers several solutions in this respect and declines all responsibility for failure to observe this indication.

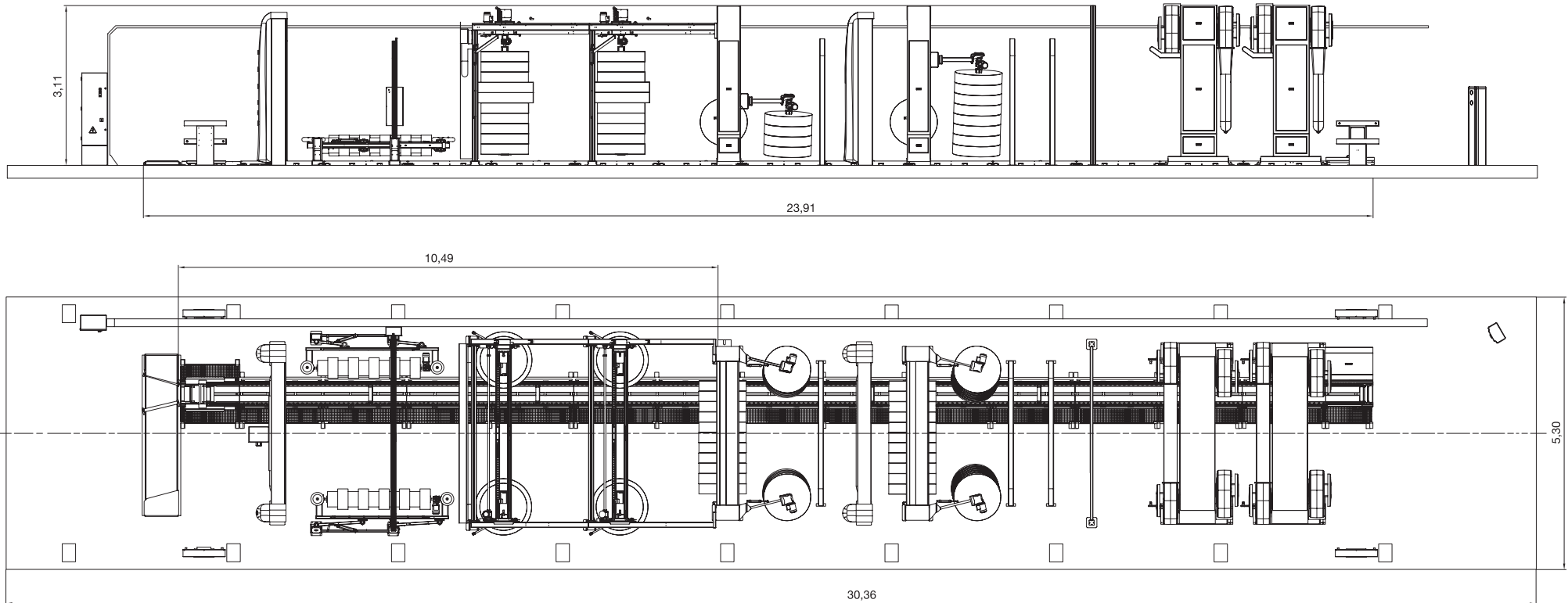


MOD. 4TC1000

RANGE	Conveyor length m.	Recommended bay m.			Max. wash Height m.	Max. wash Width m.	With Enclosures m.		
		Height	Width	Length			Height	Width	Length
TC	12.50	3.50	4.60	19.00	2.30	2.35	3.50	5.00	16.00
TC	14.10	3.50	4.60	20.60	2.30	2.35	3.50	5.00	16.00
TC	15.80	3.50	4.60	22.30	2.30	2.35	3.50	5.00	19.20
TC	17.40	3.50	4.60	23.90	2.30	2.35	3.50	5.00	19.20
TC	19.00	3.50	4.60	25.50	2.30	2.35	3.50	5.00	22.40
TC	20.60	3.50	4.60	27.10	2.30	2.35	3.50	5.00	22.40
TC	22.30	3.50	4.60	28.80	2.30	2.35	3.50	5.00	25.60
TC	23.90	3.50	4.60	30.40	2.30	2.35	3.50	5.00	25.60
TC	25.50	3.50	4.60	32.00	2.30	2.35	3.50	5.00	28.80
TC	27.10	3.50	4.60	33.60	2.30	2.35	3.50	5.00	28.80
TC	28.80	3.50	4.60	35.30	2.30	2.35	3.50	5.00	32.00
TC	30.40	3.50	4.60	36.90	2.30	2.35	3.50	5.00	32.00
TC	32.00	3.50	4.60	38.50	2.30	2.35	3.50	5.00	35.20

In order to comply with European Directive 98/37/CE, regarding machine safety, side access to a wash tunnel is expressly prohibited. ISTOBAL, S.A. offers several solutions in this respect and declines all responsibility for failure to observe this indication.

ISTOBAL, S.A., reserves the right to undertake any changes it may deem necessary for product improvement.





ISTOBAL, S.A. · Avda. Conde del Serrallo, 10
46250 L'Alcúdia (Valencia) España
T +34 962997940 · **F** +34 962997991
istobal@istobal.com · www.istobal.com

Branch:
ISTOBAL UK Limited
Mitton Mill Industrial Estate · Mill Road · Stourport on Severn · Worcestershire DY13 9BL
T 01299 826967 · **F** 01299 828442 · info@istobal.co.uk · www.istobal.co.uk